



Our invitation to you:

We are asking you to accept a visitor from our church into your home during the month of June to talk with you about the future of Squamish United Church. This visit will take perhaps an hour and a half, and is intended as an exchange of ideas about where and how we will move towards our mission.

“To be an inclusive church serving God’s World”

Like the story of the sower, every generation sows seed that brings a harvest. What kind of ‘seed’ will our church now sow? And what bounty will future generations harvest from our efforts?

We pray that the plans made now will lead to faithful service to the needs in our community. We believe that by opening our hearts and joining hands together we can take hold of the future – a secure and just future for our congregation and for our community.

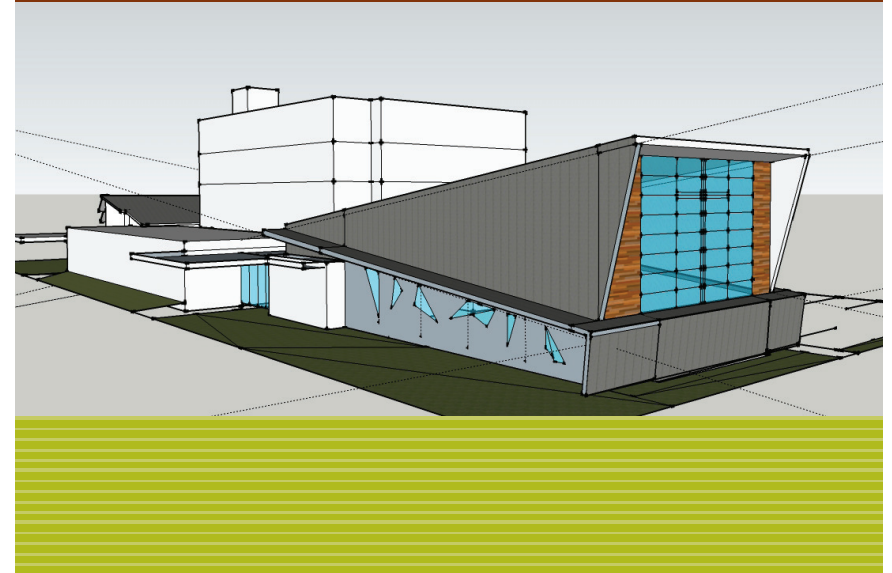
We ask that you prayerfully consider your commitment to this future. We ask you to contemplate the gifts you may be able to offer – time, energy and money. We look forward to a conversation with you.

Bert Ionson
Ken Tanner



EVERY MEMBER VISITATION AND CAPITAL CAMPAIGN

in support of the Building Development Initiative
with Sea-to-Sky Community Services Society (SSCSS)



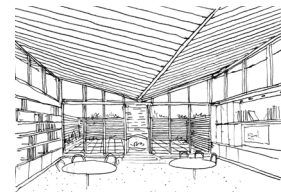
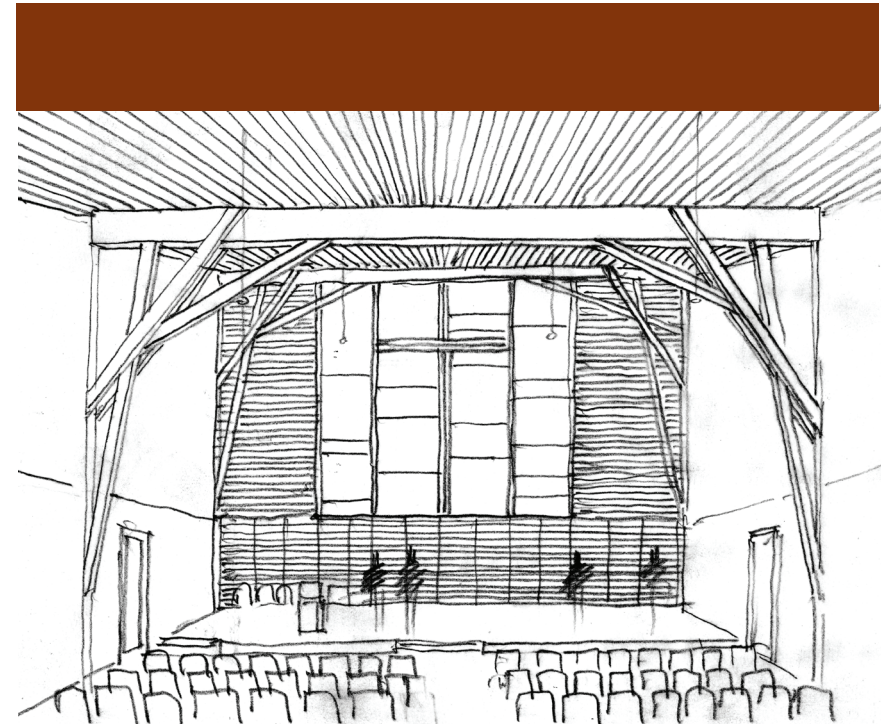
An Invitation to you from Bert and Ken to participate in the future of
SQUAMISH UNITED CHURCH



CONNECTING CHURCH & COMMUNITY

The two major goals of this every member visitation:

- To **build the future of Squamish United Church (SUC) by having a conversation** with every member and friend of SUC about the emerging reality, hopes and dreams of our congregation as we engage in a partnership between Squamish United Church and Sea-to-Sky Community Services – creating new avenues of meeting and accommodating those needing support in our community.
- To **raise a minimum of \$300,000** and hopefully more, in gifts and pledges over and above regular giving to resource our vision and new building plans.



Our new Church Facility

In collaboration with Sea-to-Sky Community Services, SUC is embarking on a new era – one in which we will share the operation and use of a combined facility incorporating:

- a Sanctuary and dedicated ministerial/secretarial spaces
- quiet room spaces for the Church
- community space that SSCSS will administer and utilize
- shared meeting rooms for SUC's use in evenings and on weekends – intended for Sunday school, meetings and use by church sponsored groups.