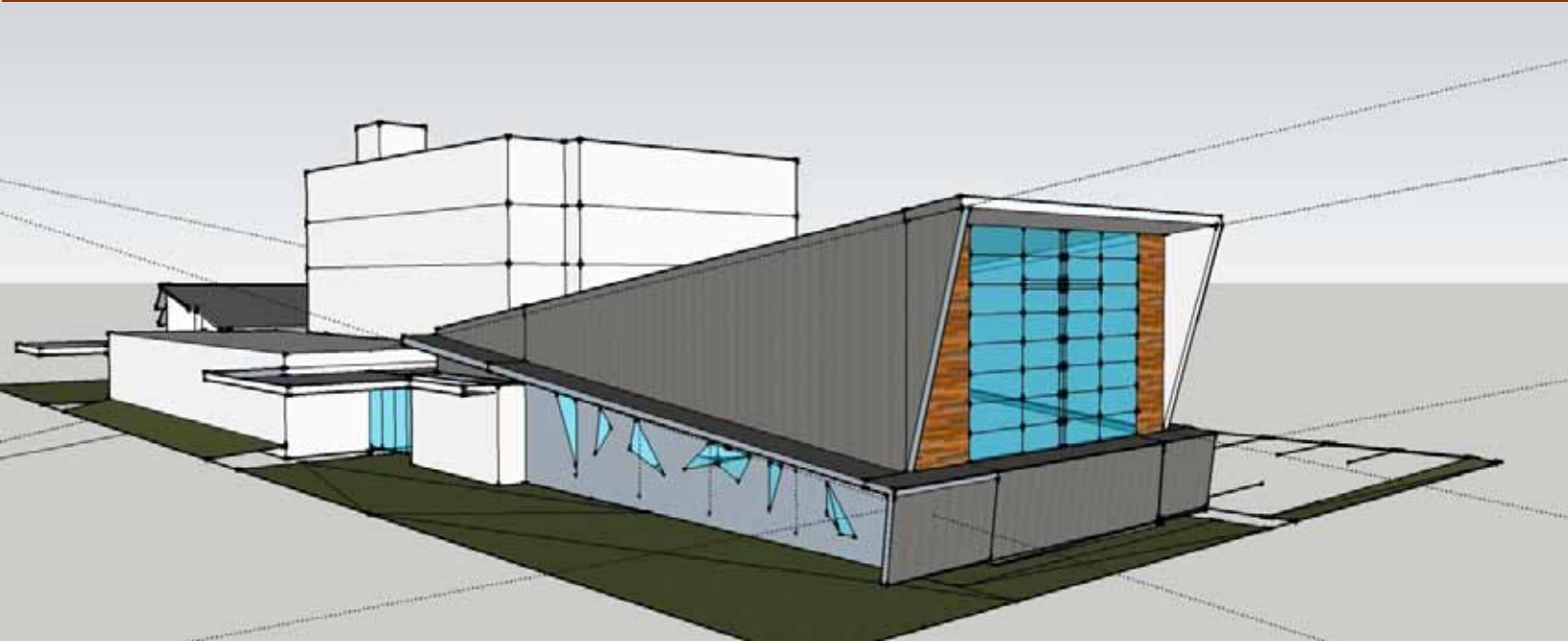




AN INFORMATION BOOKLET — FOR YOU



Capital Campaign in support of the Building Development Initiative with Sea-to-Sky Community Services Society (SSCSS)



**Our Vision —  
engage with  
our community  
to provide  
spiritual  
foundations  
and values.**

## PROJECT OBJECTIVE:

To live out our vision of ministry and outreach in collaboration with a community partner who shares our mission

### **Mission and Vision:**

The mission of Squamish United Church is to “be an inclusive church serving God’s World”. Our vision is one of engagement with our congregants and our community, providing spiritual foundations and values for all. One aspect of our vision includes creating pathways to meet and engage with our community with a view to making our ministry available to others. Support to families, the disadvantaged and those in need of spiritual growth is a cornerstone of our outreach ministry – a ministry that is optimally centered in the downtown core of Squamish. However aging facilities are limiting our ability to achieve our vision.

Sea to Sky Community Services Society is a non-profit organization engaged in providing a range of social services including residential, counseling, child care and services to individuals with developmental difficulties and other barriers in Squamish and the Sea to Sky corridor. They have been delivering these types of services for over 30 years. They are looking to enhance their operations by moving away from a model based on the rental of space for program delivery to one in which they own their own space.

A relationship between Squamish United Church and Sea-to-Sky Community Services at our existing location will expand our reach to those needing support – creating new avenues of meeting and accommodating those in our community. A relationship with SSCSS will strengthen both organizations through the creation of a new facility – tentatively named “Connecting Communities” —open, accepting and accommodating of all who seek support and personal growth.



## CONNECTING CHURCH & COMMUNITY

**Behold, I do a new thing.**

*(Isaiah 43: 19)*

### DEFINING MOMENTS — that have shaped SUC

The Squamish Presbyterian Church (established in 1922) became Squamish United Church (SUC) in 1927 as part of the original United Church of Canada unification initiative. Originally located on 4th Avenue, the church moved one block south to its current location in 1950 and a hall for Christian Education (Trinity Hall) was added. A new Christian Education building was constructed in 1963 with intentions to be supplemented by a Church building, but was never fully finished, and now serves as the SUC church sanctuary. After selling an original Manse in 1966, SUC purchased a Manse in Brackendale, which was subsequently sold in 2005.

SUC membership expanded significantly during the 1950s and 1960s when many Canadians participated in church life. In recent years, SUC has encountered a changing local society here in Squamish in which participation in church life is no longer a core influence for many people, thus the membership level at SUC has remained viable and relatively consistent over the last decade. However, anticipated growth of the Squamish community to over 28,000 in the next twenty years (source: BC Government projections) has the potential to significantly increase membership in our church community.

Despite the leveling trend in our membership, our congregation has demonstrated a commitment to live as a community of spiritually passionate and compassionate people. We want to deepen our connection with God as Creator, Christ and Spirit, love our neighbour and participate in our community. We want to be rooted in deep joy and gratitude for the goodness of life, sharing this gift of faith with others. We want to engage in meaningful, purpose driven ministry that makes a difference in our lives, our community and around the world.

## MINISTRY AND OUTREACH

Our existing sanctuary has been the focal point for our ministry for over 50 years. The new facility is designed to enhance our ministry and revitalize our outreach in a number of ways for the next half century and beyond.

Our Mission Statement is “to be an inclusive community serving God’s world.” As a church we desire to provide leadership and a Christian presence that serves both the congregation and the wider community. This vision and mission has led us to the direction we are taking at this time. In the past years we have held up a desire to honor what are considered the five marks of the Christian church:

- **Worship**
- **Building Up of the Community of Believers**
- **Service and Ministry**
- **Proclamation and Evangelism**
- **Faith and Spiritual Formation**

### ● **Worship**

As we develop the continued ministry of Squamish United Church we seek to offer inspiring Worship through music and message that is welcoming to people of all stages of life and faith.

#### **Methods:**

- A new sanctuary that treasures our traditions and creates a fresh welcoming Spiritual Center.
- Both traditional and innovative worship will be offered with a well set up multi-media system, using music and styles that engage worshipers of all ages and stages of life and faith.
- We will offer worship opportunities other than Sunday morning, including healing services, contemplative worship (Taize, Celtic), family services and contemporary services.
- With this worship we will bring offerings that are traditional and contemporary, inclusive, intergenerational and culturally diverse through a wide genre of quality music.

**CONNECTING**  
CHURCH & COMMUNITY



## ● Building Up of the Community of Believers

We seek to welcome, encourage and care for each other while creating a culture of invitation and expectation of deepening the spiritual journey. We will grow and strengthen this community of believers by nurturing and supporting them in their spiritual life.

### **Methods:**

- It is our hope that members new and old, young people and elders will be engaged in the life and ministry of the community in meaningful ways.
- We will build strategies to welcome and increase the number of young families in our church community.
- We will enhance our Sunday School, youth programs and adult education programs.
- We will provide programs and opportunities to build and develop committed lay leadership.
- Our mission and vision will seek to lead people of all ages into an experience of the love of God as we grow as followers of Jesus.

---

## ● Service and Ministry

Within our church and the wider community we seek to engage all people in hospitable, caring and welcoming ways. Our facilities will provide a multipurpose use for our congregation and for the downtown community. We value our presence in the downtown area and seek to serve and minister to Squamish in new ways.

### **Methods:**

- We will strengthen our support and nurture of those who are sick, grieving, chronically ill or dying and their caregivers by building up an expanded pastoral care team with regular training.
- We will offer community support groups and resources in areas of need
- We will create opportunities for public forums to explore and respond to emergent issues.
- We will set up a library of useful books and digital resources.

## MINISTRY AND OUTREACH

### ● Proclamation and Evangelism

We will be a light to this community breaking through places of darkness offering love, grace and justice to all we encounter. We will effectively share the Good News of God's love when we open ourselves up to being transformed by the encounter with the Holy found in one another and each of our neighbours.

#### **Methods:**

- We desire to become a concrete living presence of Christ in the surrounding community.
- To build relationships with and in our community, we will have regular community activities with our congregation, other faith communities, our neighbours and friends; creating opportunities for all to nourish our bodies, minds and the longings of the spirit.
- We will invite others to join us in regular ministry and serving opportunities.
- We will continue to establish effective communications programs and systems by maintaining the website; writing and distributing press releases to the media about events and important developments connected with Squamish United Church.
- We will have a drop in area that will minister to the needs of our neighbours by providing regular opportunities for connection and conversation.
- We will create opportunities to reach out to others in the world in times of crisis and peace by providing community events and services for specific world needs.
- We will continue to enthusiastically support the Mission and Service fund.

### ● Faith and Spiritual Formation

We long to create a culture of invitation, development and expectation of deepening on the spiritual journey through a variety of spiritual practices. We will provide people of all ages an opportunity to experience the love of God, and to grow as followers of Jesus. We place value on life long spiritual learning and growth.

#### **Methods:**

- Build a culture of sacred engagement so that the majority of our congregation will be involved in a daily spiritual practice.
- Develop small group ministry by forming a group dedicated to discerning people's gifts and skills to connect people in small groups and nurture those gifts for the benefit of all.
- We seek to have the majority of our congregation belonging to groups of 8–10 people to break bread together, pray, provide support, learn, grow and be held in loving accountability.
- Members will be encouraged to participate in a "gift inventory" assessment and connected with ministries that suit their gifts and interests.



## ● Family Ministry

We seek to follow Jesus' example as we engage children and families in our faith community, neighborhood and the world. Children and parents need tools (language, practice and relationships) to grapple with the questions of life and faith. Studies show children's spirituality is a significant contributor to their overall happiness.

Family Ministry:  
We will value and nurture children and families as gifts from God.

### **Methods:**

- We will explore approaches to strengthen our ministry for children, youth and families. This ministry will create opportunities to support parents' spiritual lives and practices so they feel better equipped to support their children.
- We will create numerous opportunities for families to connect with and engage in intentional Christian community through parenting groups, book studies, Christian education, spiritual practices, shared meals, and where appropriate childcare and children's programs.
- We will explore the option of having a faith-based after school program where children and/or youth engage and explore their faith through play, learning (e.g. environment, poverty, vocation exploration, political action, social media, health and social issues) and action (e.g. service projects, music, art and drama social media).

## ● Stewardship

We will engage members of all ages in stewardship as an active part of their faith.

We will develop a continued spiritual practice of stewardship that reflects

- how we relate justly to the rest of creation;
- how we earn, spend, invest, and share money;
- how we invest and share time and talents;
- how we share who we are as God's beloved children;
- how we organize our whole life to share God's good news.

The "bottom line" in stewardship is not about balancing church budgets. It IS about lives in balance. It's about personal, family, congregational and denominational lives that flow from what God is calling us to be, living out a Spirit-empowered vision of what God's world could be.





# AN INVITATION TO JOIN US

— in Connecting Church and Community



As your current minister I appreciate being part of the blessing and gift of a church community that is willing to stretch, expand, and learn together as they care for, minister to, and worship with each other. Squamish United Church is a living example of what church is called to be.

Loren Mead from the Alban institute says “We are at the front edges of the greatest transformation of the church that has occurred for over 1,600 years. It’s by far the greatest change that the church has ever experienced in America (even more so in Canada); it may eventually make the transformation of the reformation look like a ripple in a pond.”

I look forward to seeing how the spirit will move us as we respond this transformational time. Every generation is called to move with the living, breathing, spirit of God sowing seeds of faith that will bring forth an abundant harvest. Seeking to be ‘inclusive community caring for God’s world’ we have the opportunity to sow and grow with faith like a mustard seed.

I have been carrying this image of the mustard seed for us in the last several months. As I see it the seed of faith we are already offering has the chance to grow into more than just a bush on the corner of 4th and Victoria. We have the opportunity to grow like a large abundant tree intertwining itself with everything it can touch. The Spirit is calling us to be a church that shares the hope of the gospel in a way that touches everything within our reach without abandon, with radical inclusiveness and faith-filled action.

Together we seek to be a place for all who hunger and thirst physically and spiritually offering a sacred space and a place to ask the questions of life that matter. Through developing our building and connecting

with our community we are stating a readiness to move with the spirit in this transformation. In the days ahead at times we will feel like we are going through the swamp. My colleague (Debra Bowman) would remind us it may be thick and mucky, and at times we will wonder if we are going the right way. But in the swamp, even when it’s hard to lift your feet, pause and notice and you will see you are surrounded by abundant life in the midst of what appears to be chaos.

Through connecting church and community we are saying as boldly as possible that we believe the spirit of the living Christ is present and working among us now.

Through re-energizing our ministry for today, by setting ourselves goals for new work and initiatives, we are revitalizing our connection with God and are offering ourselves to be God’s hands and feet in this community and beyond.

Through giving to this Capital Campaign we are re-committing ourselves to God and one another as we share the burden and the abundance together. We understand very well that the decisions and commitments we make in these next months will impact the ongoing health and growth of Squamish United Church.

And so we invite you to believe, dream, risk, imagine and be transformed with us as you invest in the present and future of Squamish United Church.

I ask you to prayerfully consider your commitment to this vision of growth and abundance as we connect our church and community.

**Amen.**

*Rev. Karen Millard*

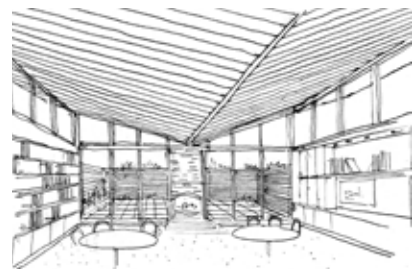
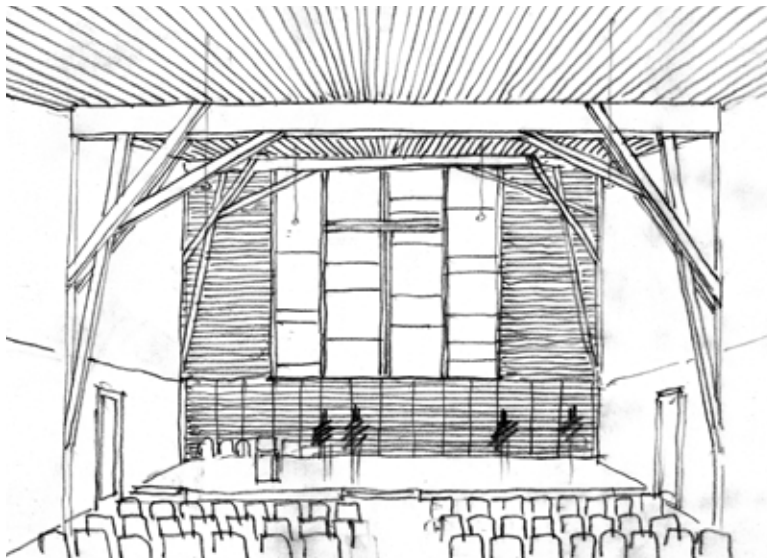


# OUR PROJECT

The project as envisaged between SUC and SSCSS involves completing a number of mandatory steps to implement our vision and collaboration:

	2011				2012				2013			
	Q1	Q2	Q3	Q4	Q1	Q2	Q3	Q4	Q1	Q2	Q3	Q4
<b>Legal &amp; Finance Timeline</b>												
Legal Documents Signed												
Congregational Campaign												
Fundraising/Subsidies												
Financing in Place												
<b>Project Timeline</b>												
Program Manager Engaged												
Construction Contract Awarded												
Duration of Construction												
<b>Key Decision Points</b>												
Re-zoning Approvals												
Financing Commitments												
Removal of Final Precedent Conditions												
Move into New Church												

In collaboration with Sea-to-Sky Community Services, SUC is embarking on a new era – one in which we will share the operation and use of a combined facility incorporating a Sanctuary and dedicated ministerial/secretarial and quiet room spaces for the Church, along with shared meeting rooms for SUC’s use in evenings and on weekends – intended for Sunday school, evening meetings during the week and use by church sponsored groups.



## FINANCIAL OBJECTIVES

The financial objective of this initiative has 2 components:

- 1) The capital campaign to specifically support the construction of the new development, and
- 2) our ongoing financial stewardship responsibilities.

### 1. Capital campaign

A significant amount has been done to work with SSCSS as we move through the planning phases. For example, some of the “lead in” work that has been completed includes legal and geo-technical surveys as well as architectural and legal professional services.

An initial “quality survey” cost estimate has been completed. The building project is anticipated to cost approximately \$1.5 Million – costs will be more accurately estimated as design elements are finalized and engineering specialists and cost surveyors finalize the plans.

The financial goal for this component of the campaign is \$500,000 that will be augmented with existing investment funds, fundraising and grants (see the following table).

### 2. Ongoing stewardship

While we are meeting our current budget obligations, there is also a need to strengthen our ongoing commitment to participating in God’s work in our congregation and the world. We need to realize an increase in givings this year, with further increases as we go forward year-to-year. As a congregation, we currently raise just over \$80,000 annually (including almost \$11,000 for Mission & Service).

## FINANCIAL PLAN

### **Squamish United Church — Business Case for Building Project**

Anticipated Building Cost: .....	\$1,500,000
Sources of funds: Capital Fund .....	\$750,000
Pledges over 3 years.....	\$500,000
Subsidies and Fundraising	\$250,000

*Note: It is the intention of the board to conduct a successful campaign and fundraising initiative that will fully fund the project.*



## STEWARDSHIP SUMMARY

	2011 Budget	Year 1	Year 2	Year 3
Total Receipts (Givings plus other income)	\$135,000	\$148,000	\$159,800	\$172,780
Total Renumeration	\$107,000	\$107,000	\$112,350	\$117,968
Total Secular Expenses	\$35,000	\$35,000	\$36,750	\$38,588
Total Outreach Expenses	\$29,000	\$29,000	\$31,050	\$33,263
Bridge Financing for Congregational Commitments		\$19,200	\$14,400	\$9,600
Total Expenses	\$171,000	\$190,200	\$194,550	\$199,418
Surplus/(Deficit)	(\$36,000)	(\$42,200)	(\$34,750)	(\$26,638)

*Note: Following the results of the campaign the board will be presenting an updated financial plan for moving forward.*

## HOW WE ARE ASKING YOU TO RESPOND

### Squamish United Capital Campaign

#### An Invitation to Contribute

Our ministries matter. Good work has been, and continues to be, accomplished at Squamish United Church. We have made life-changing contributions to the lives of people in Squamish, and all over the world through our M&S contributions.

As Christians, we are called to be faithful participants in building God's community, restoring relationships and expanding ministry. The

decisions made now can provide the underpinnings for the ongoing health and growth of the United Church's presence in Squamish.

Like the story of the sower, every generation sows seed that brings a harvest. What kind of 'seed' will our congregation sow? And what bounty will future generations harvest?

We pray that the plans made now will lead to faithful service

to the needs in our community. We believe that by opening our hearts and joining hands together we can take hold of the future – a secure and just future for our congregation and for our community.

We ask that you consider prayerfully your commitment to this future.

Now we have arrived at a unique place in our community history, a 'tipping point'. A place that signifies a new chapter for Squamish United Church.

# THE GIFT THAT MATTERS

Stewardship is recognizing that everything we have is a gift from God. We are the trustees, who faithfully use what God has given us to share God's vision of peace and justice with the world.

"Freely you have received, freely give."

Matthew 10:8

We respond to God's goodness by caring about Creation, and by sharing our blessings with others, joyfully giving a portion of all we have been given to do God's work. This is Christian Stewardship.

It is **now** that every individual and household in our congregation is being asked to respond to the Capital Campaign. We are asking you to be a partner in opening the door to a new future for our congregation. Our goal through this campaign is to raise \$500,000 in pledges over three years. We believe that it is our shared stewardship commitment.

You are being invited to make a generous contribution **over and above your current annual giving**. This special contribution can be spread over three years. Pledges made over a three-year period or immediate financial gifts will enable the congregation to plan effectively and ensure our financial commitments are met.

It is encouraging that an overwhelming majority of those we have talked to about this campaign support it. A recent feasibility planning study by Waller & Associates indicated high levels of support for the campaign and concluded that, by everyone working together, it is possible for our congregation to raise a minimum of \$300,000. We believe \$500,000 is an achievable goal.

## How you can make a difference

With everyone giving according to equal generosity—not equal amounts—we can enhance Squamish congregation's mission. A key campaign goal is the participation of every household.

The following chart is one example of how a minimum campaign objective of \$300,000 can be met through various levels of giving in monetary gifts and pledges.



We are honouring every individual and household with a conversation and a visit. Your visitors will not ask you to make a decision during the visit about your financial support.

	Weekly Amount	Gift Level Over 3 Years	Number of Gifts Required	Total Amount	Cumulative Total
SUPPORTER	\$6	\$1,000	20	\$20,000	\$20,000
	\$10	\$1,500	20	\$30,000	\$50,000
	\$19	\$3,000	10	\$30,000	\$80,000
LEADER	\$32	\$5,000	10	\$50,000	\$130,000
	\$64	\$10,000	8	\$80,000	\$210,000
VISIONARY	\$96	\$15,000	1	\$15,000	\$225,000
	\$160	\$25,000	1	\$25,000	\$250,000
	\$320	\$50,000	1	\$50,000	\$300,000

**A very powerful option** to maximize your gift is to give back the cumulative tax credits (44%—see the Supplementary Tax Considerations information that follows.) Giving back the cumulative refunds (or credits)

of your gift can leverage your gift by nearly 1.8 times (over the three-year pledge period). A one-time giving of \$1,000 in year one results in a \$440 tax credit. \$440 given back in year two results in another \$194 tax credit and so forth.

### **An example of contributing your tax credit back to the campaign:**

- A gift of \$89 a month given for 36 months turns into a **total gift of \$3,214.**  
**The actual cost to the giver is \$1,800.**
- A gift of \$268 a month for 36 months turns into a **total gift of \$9,643.**  
**The actual cost to the giver is \$5,400.**

## **TAX CONSIDERATIONS**

As you consider your pledge to the campaign, it may be helpful to remember that based on current income tax laws, like all giving to the church, you will save on your income tax. Contributions are tax deductible.

God calls us to invest in activities that change the very real lives of people and the world.

### **There are two ways to give to the campaign:**

- Gifts and pledges—cash gifts made over the next three years
- Planned gifts—a gift funded from accumulated resources or assets, rather than income

Since the spring 2006, gifts of securities or mutual funds to charitable organizations in Canada can avoid payment of capital gains tax otherwise payable by the donor. The Canadian government introduced this initiative to encourage such gifts, benefiting both the charity and the donor; the appreciation in value of such purchases may be quite significant when they are transferred directly to the church.

### **Tax Credit Chart**

As you consider the amount of your potential gift to the campaign, please remember that our current tax laws provide a tax credit of 44% for any giving to the church in excess of \$200.

This means that the net impact on your financial situation is much less than the gross amount contributed. This is outlined in the chart below.

Your Weekly "Out-of-Pocket" Contribution to the Campaign	Your "Out-of-Pocket" Contribution to the Campaign***	Your 44% Tax Credit Contribution to the Campaign**	Your Total Cumulative Contribution to the Campaign over 3 years*
\$10	\$1,500	\$1,200	\$2,700
\$19	\$3,000	\$2,400	\$5,400
\$32	\$5,000	\$4,000	\$9,000
\$64	\$10,000	\$8,000	\$18,000
\$96	\$15,000	\$12,000	\$27,000

\* Based on a tax credit rate of 44% | \*\* Based on a commitment over 3 years (36 months) | \*\*\* Before tax credit

Please consult your financial advisor or accountant to determine your actual savings. If a gift exceeds 75% of net income, the tax credit for the gift can be claimed over five years.

# GIFTS THAT YOU MIGHT CONSIDER

## Planned Gifts

Under our current tax laws, there are opportunities for you to make a significant gift to Squamish United Church from your accumulated resources or assets. Because of the tax advantages, this gift will not negatively impact your current financial circumstances.

There are two major categories of planned gifts:

### Immediate Gifts

#### **Marketable Securities**

These gifts may take the form of cash, stocks, bonds, current life insurance policies or mutual funds. Making a gift of securities or mutual funds can reduce the accrued capital gains tax that you might owe.

#### **Charitable Gift Annuity**

You can receive tax-free retirement income along with an immediate gift to Squamish United Church. This is a gift that gives back to you.

#### **Home Equity Loan**

You can make a gift to the campaign through your home mortgage.

### Future Gifts

#### **Bequests Through a Will**

Bequests are a very important and meaningful way to leave a final gift to Squamish United Church. You can leave either a specific gift of cash, artwork or other assets, or a portion of your estate.

#### **Life Insurance**

Making the church a beneficiary of a life insurance policy will give you a tax benefit today and provide a future gift to Squamish United Church. With a modest monthly insurance premium for a new policy, you can leave a substantial legacy to the congregation in the future. Your annual premiums are tax deductible.

#### **Charitable Remainder Trust**

You place cash, property or securities in a trust for Squamish United Church and receive a guaranteed income for life, with substantial tax savings.

## Professional Support

Gifts in either category require careful planning to take advantage of Canada's tax laws that are designed to encourage generous giving. As part of the campaign, we will have a professional financial advisor, knowledgeable in all aspects of charitable gifts and planned giving, available to meet with you to discuss specific giving opportunities.

## THANK YOU

**Capital Campaign Co-Chairs:** Bert Ionson & Ken Tanner

We would like to thank you for your prayerful support to the mission of Squamish United Church and our initiative to engage with our Squamish Community. — *Bert & Ken*

# Squamish United Church

## COMMITMENT FORM



Name: \_\_\_\_\_

Address: \_\_\_\_\_ Postal Code: \_\_\_\_\_

Phone: \_\_\_\_\_ Email: \_\_\_\_\_

*I/We believe that God has called us to fulfill our shared vision for Squamish United Church as a community striving to be faithful to God, and I/We pledge our support to make that vision a reality.*

**It is my/our firm commitment to contribute:**

**A total amount of \$ \_\_\_\_\_, as follows:**

**An initial gift of \$ \_\_\_\_\_ to be made by July 31st, 2011.**

### AND

**A.** Monthly installments totalling \$ \_\_\_\_\_  
\$ \_\_\_\_\_ per month for \_\_\_\_\_ months,  
commencing \_\_\_\_\_, 2011

**or**

**B.** Annual payments totalling \$ \_\_\_\_\_, as follows:  
\$ \_\_\_\_\_ by \_\_\_\_\_, 2011  
\$ \_\_\_\_\_ by \_\_\_\_\_, 2012  
\$ \_\_\_\_\_ by \_\_\_\_\_, 2013

**or**

**C.** Single payment of \$ \_\_\_\_\_ to be paid  
on or by (date) \_\_\_\_\_

**or**

**D.** A gift of publicly listed securities/shares with  
an estimated value of \$ \_\_\_\_\_  
(more info is available at [www.unitedchurchfoundation.ca/donationinformation/giftsofsecurities.html](http://www.unitedchurchfoundation.ca/donationinformation/giftsofsecurities.html))

### PLEDGES

I wish to pay by:

- ☐ **Pre-Authorized Remittance**  
(PAR) – please enclose  
voided blank cheque
- ☐ **Post-dated Cheques**  
Payable to  
"Squamish United Church"  
MEMO: CAPITAL CAMPAIGN

I am interested in knowing more about these types of gifts:

- ☐ Life insurance    ☐ Bequests    ☐ Charitable Annuities    ☐ Charitable remainder trusts

*I/We understand that this campaign commitment is made in addition to my/our regular weekly offering.*

Signature(s): \_\_\_\_\_

Date: \_\_\_\_\_ Envelope Number: \_\_\_\_\_

### NOTES:

1. The confidentiality of donors will be respected.
2. It is understood that pledges may be revised or suspended due to changing circumstances.
3. Receipts for income tax purposes will be issued for all funds received up to and including December 31st of each year, in accordance with the current Tax Regulations.

Please make cheques payable to "Squamish United Church"  
Squamish United Church | 38014 4th Ave. PO Box 286, Squamish, BC V8B 0A3 | [secretarysquunited@telus.net](mailto:secretarysquunited@telus.net)





## IN CONCLUSION

We realize that there are many options for our money and individuals are continually pressed to exercise responsible management of all that God has provided. But we also ask that people prayerfully consider their circumstances and grow in your financial stewardship to do God's work both on an ongoing basis and for this project specifically.

---

### **A Prayer for Squamish United Church**

Creator God, with whom we journey  
in this season of the life and faith  
we live in hope, trust and mystery  
longing to live into your wisdom  
as the one who makes all things new.

Holy One, we give you thanks for the gift of each new day.  
And for the mission and ministry of Squamish United Church.  
Living in your grace and faithfulness we have embraced your presence in our lives.  
as together we have ministered in downtown Squamish for almost a century

We hold deep gratitude for the many who have  
built this church and community over the years.  
We cherish the gifts given by those who have gone before us,  
Live in appreciation of those who serve and minister with us now,  
And are already thankful for the anticipated ministry that will follow us.

God in whom we live and move and have our being  
Enliven, Strengthen and Entice us now to be a vibrant centre for mission and ministry,  
embracing the lives of the people of Squamish as we connect our church and community.

Transforming Spirit be with us in this season  
as we begin to live out our ministry in a new way  
Assist us as we seek to be faithful stewards of all we have.  
Give us wisdom and courage as we seek to live out our mission and ministry  
through redeveloping our church property and connecting with Sea to Sky Community Services,  
Always being thankful for the many blessings we have already been given.

Holy Spirit, deepen our trust,  
as we partner with you,  
in making all things new.

**Amen.**

The Reverend Karen Millard — May 2011